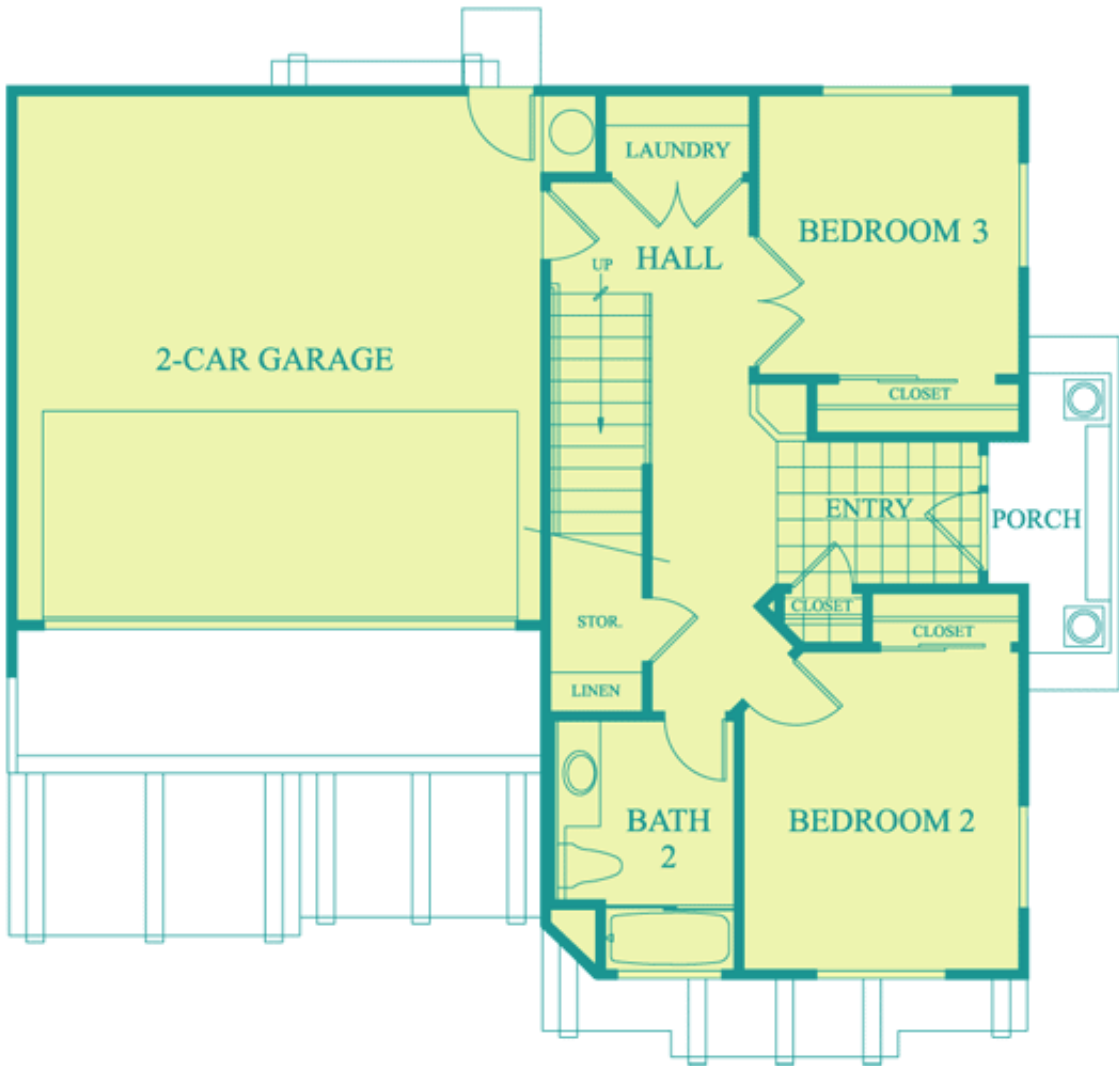
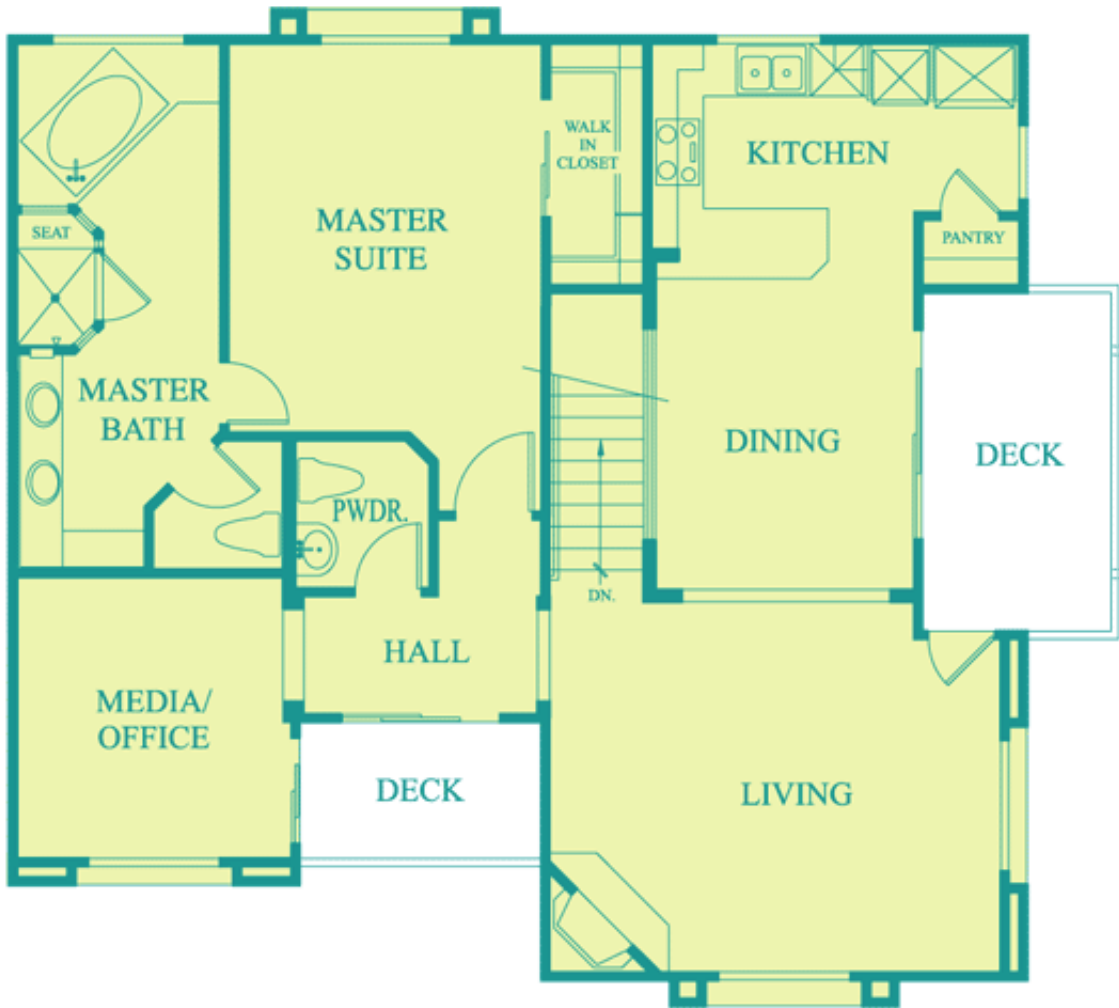


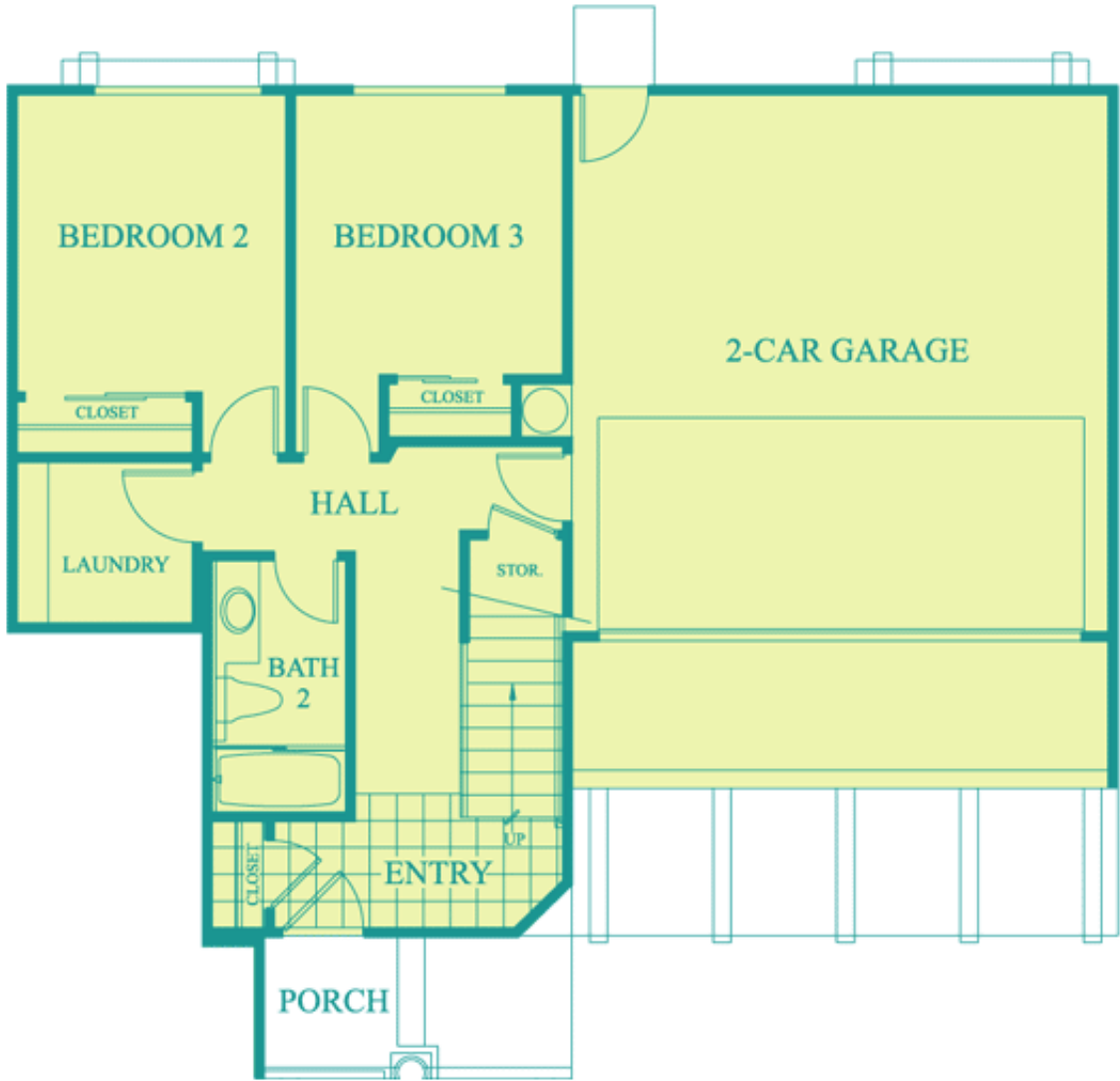
<b>Pacific Crest</b> 1900 Cherry Ave . Signal Hill, CA 90755		Sales: (562) 494-2184	
Townhome	PLAN A	First Floor	Approx. 1650 SF - 3 BR 2 1/2 BA



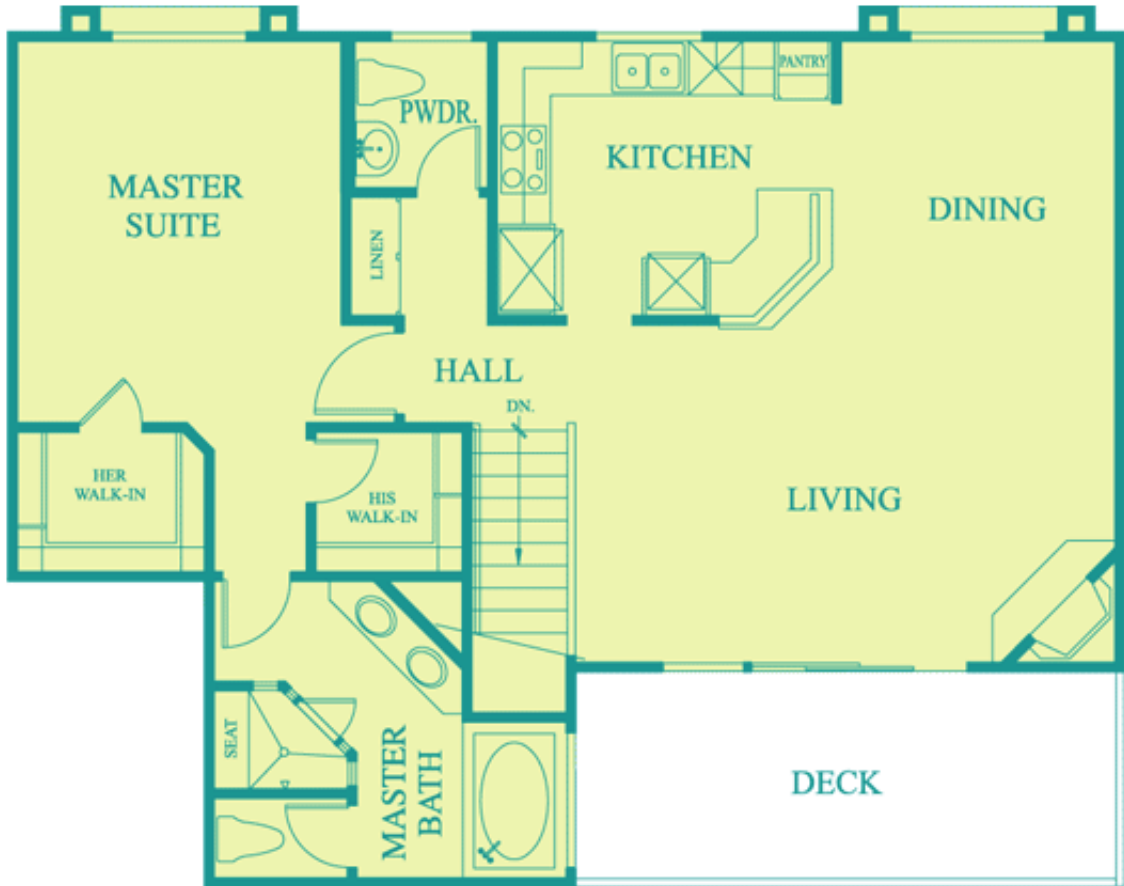
<b>Pacific Crest</b> 1900 Cherry Ave . Signal Hill, CA 90755		Sales: (562) 494-2184	
Townhome	PLAN A	Second Floor	Approx. 1650 SF - 3 BR 2 1/2 BA



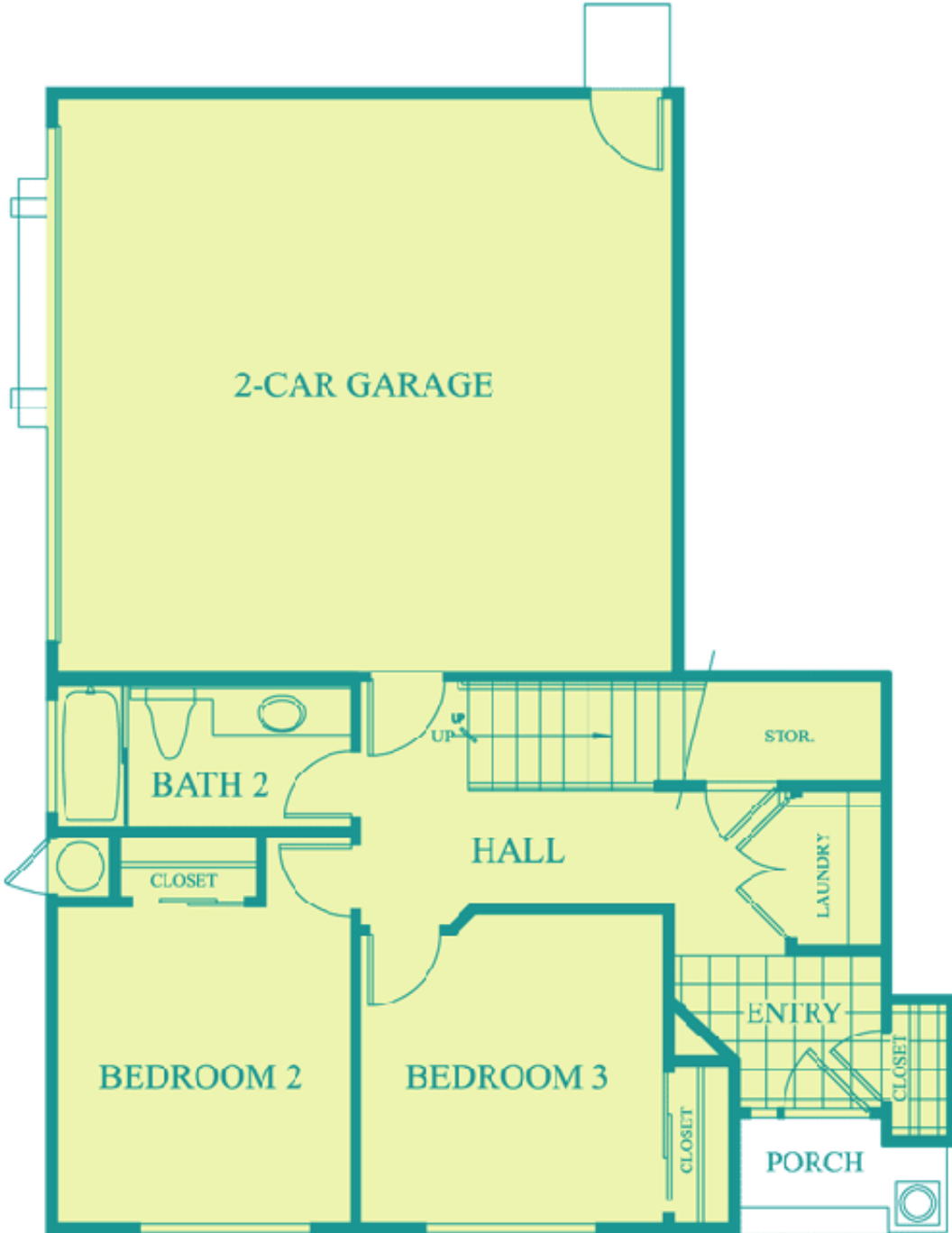
<b>Pacific Crest</b> 1900 Cherry Ave . Signal Hill, CA 90755		Sales: (562) 494-2184	
Townhome	PLAN B	First Floor	Approx. 1600 SF - 3 BR 2 1/2 BA



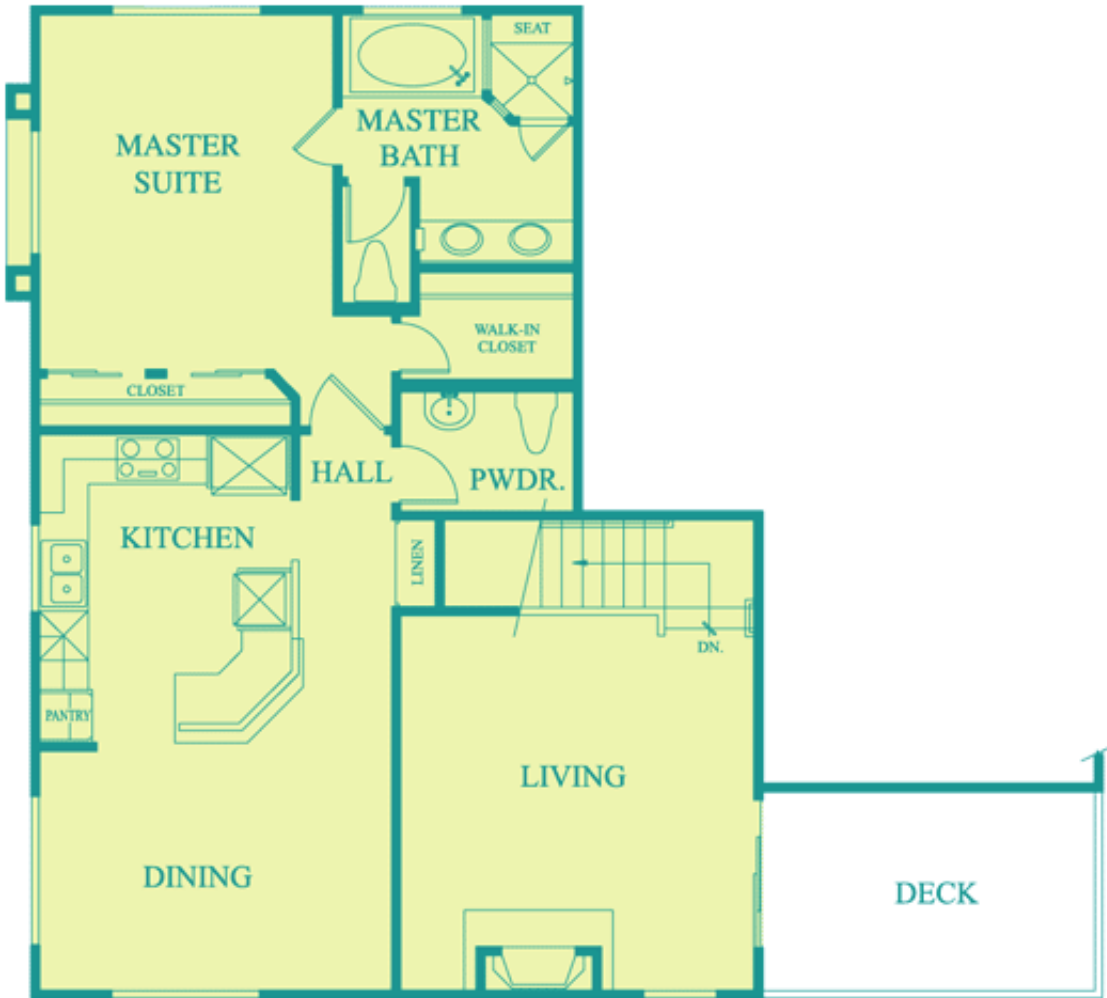
<b>Pacific Crest</b> 1900 Cherry Ave . Signal Hill, CA 90755		Sales: (562) 494-2184	
Townhome	PLAN B	Second Floor	Approx. 1600 SF - 3 BR 2 1/2 BA



<b>Pacific Crest</b> 1900 Cherry Ave . Signal Hill, CA 90755		Sales: (562) 494-2184	
Townhome	PLAN C	First Floor	Approx. 1600 SF - 3 BR 2 1/2 BA



<b>Pacific Crest</b> 1900 Cherry Ave . Signal Hill, CA 90755		Sales: (562) 494-2184	
Townhome	PLAN C	Second Floor	Approx. 1600 SF - 3 BR 2 1/2 BA



<b>Pacific Crest</b> 1900 Cherry Ave . Signal Hill, CA 90755		Sales: (562) 494-2184	
Detached Home	PLAN 1 -5	First Floor	Approx. 1850 SF - 3 BR 2 1/2 BA



**Pacific Crest**

1900 Cherry Ave . Signal Hill, CA 90755

Sales: (562) 494-2184

Detached Home

PLAN 1 -5

Second Floor

Approx. 1850 SF - 3 BR 2 1/2 BA

